

U55-4 OPTIONS

STANDARD EQUIPMENT

Safety system

- Engine start safety system
- Travel motor with disc brake
- Swivel motor with disc brake
- All hydraulic control

Working equipment

- Auxiliary circuits 1 and 2
- 2 working lights on cab and 1 light on the boom
- Canopy lights
- Travel alarm
- Float blade

Operator's space

- ROPS/FOPS canopy and cab
- Weight-adjustable full suspension seat
- Retractable seat belt
- Hydraulic pilot control levers with arm rests
- Travel levers with foot pedals

- Two pattern selection system
- Digital panel
- 12V power source
- Cup holder
- Horn

Engine/Fuel system

- Double element air filter
- Auto idling system
- Water separator with drain cock

Undercarriage

- 400 mm rubber track
- 1 × upper track roller
- 5 double-flange track rollers on each side
- 2-speed travel switch on dozer lever
- 2-speed travel with auto-shift

Hydraulic system

- Pressure accumulator
- Hydraulic pressure checking ports

- Straight travel circuit
- Third line hydraulic return
- 3-pump load sensing system
- Adjustable maximum oil flow on auxiliary hydraulic circuits 1 and 2

Others

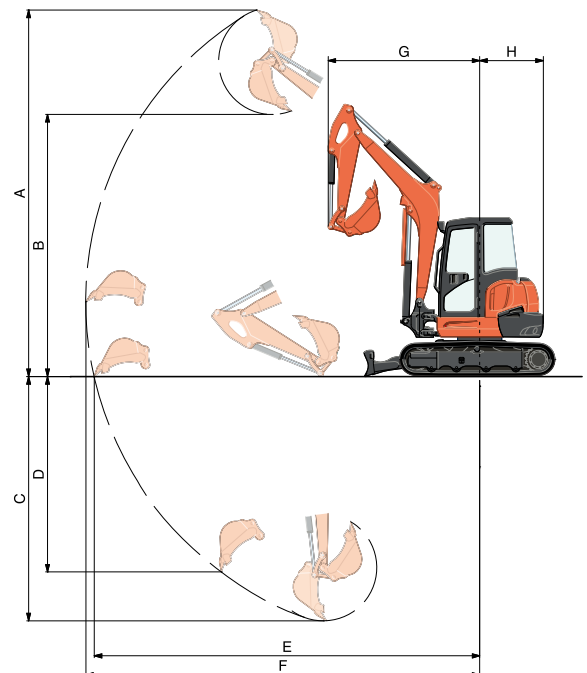
- Tool box
- Grease gun holder
- Pre-cleaner

OPTIONAL EQUIPMENT

- Angle blade with float function and Bolt on Cutting Edge.
- Cab with A/C
- Rear working lights
- Beacon lights
- 400 mm steel track for Angle blade model

WORKING RANGE

Model		U55-4		
A	Max. digging height	mm	5665	
B	Max. dumping height	mm	4005	
C	Max. digging depth	mm	3630	
D	Max. vertical digging depth	mm	2830	
E	Max. digging radius at ground	mm	5960	
F	Max. digging radius	mm	6105	
G	Min. turning radius	W/O swing	mm	2460
		W swing	mm	2020
H	Min. tail turning radius	mm	1045	

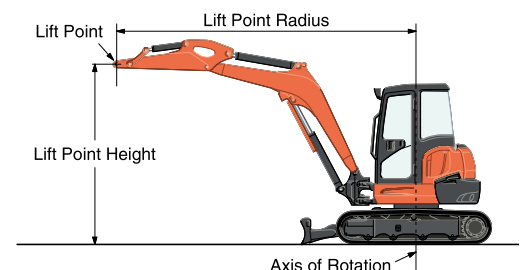


LIFTING CAPACITY

Canopy rubber

LIFT POINT HEIGHT (m)	LIFTING CAPACITY OVER-FRONT BLADE DOWN unit = ton				LIFTING CAPACITY OVER-SIDE unit = ton		
	LIFT POINT RADIUS (m)			LIFT POINT RADIUS (m)			
	4	5	MAX	4	5	MAX	
3	1.18	-	-	0.79	-	-	
2	1.36	1.16	1.08	0.76	0.53	0.50	
1	1.56	1.22	1.16	0.71	0.52	0.48	
GL	1.65	1.21	1.18	0.68	0.50	0.49	

Machine with canopy and rubber crawler, without bucket

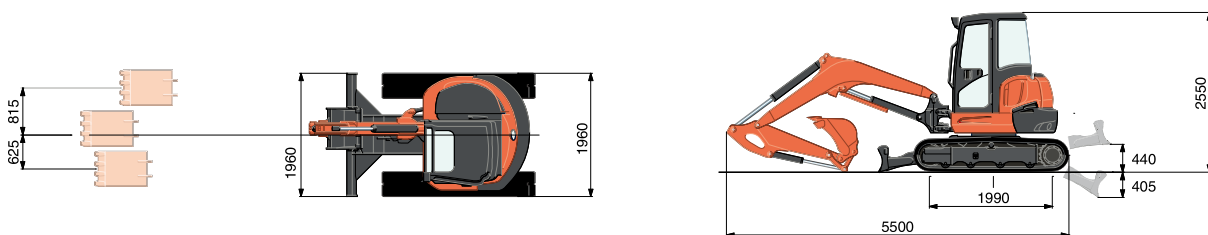


SPECIFICATIONS

Model		U55-4		U55-4 Angle Blade	
Type of ROPS / FOPS		Canopy / Cab			
Type of tracks		Rubber / Steel			
Engine	Model		Kubota V2607-DI		
	Output (SAEJ 1995 gross)	HP (kW) / rpm	47.6 (35.5) / 2200		
	Output (SAEJ 1349 net)	HP (kW) / rpm	45.4 (33.8) / 2200		
	Displacement	cc	2615		
Dimensions	Overall length	mm	5500		
	Overall height	mm	2550		
	Overall width	mm	1960		
	Min. ground clearance	mm	310		
Hydraulic system	Pump capacity	ℓ / min	56.1 variable × 2 / 37.0 Gear × 1		
	Auxiliary hydraulic flow	Left / Right ℓ / min	75 / 37		
	Max. breakout force	Bucket / Arm kgf	4315 / 2770		
Drive system	Travel speed	Rubber Low / High km/h	2.8 / 4.9		
		Steel Low / High km/h	2.6 / 4.6		
	Max. traction force	Low speed kgf	6567		
	Tumbler distance	mm	1990		
	Crawler length	mm	2500		
	Shoe width	Rubber / Steel mm	400		
	Ground contact pressure	Rubber kPa (kgf/cm ²)	30.0(0.306) / 30.5(0.311)	31.1(0.317) / 31.6(0.322)	
Steel kPa (kgf/cm ²)		30.6(0.312) / 31.1(0.317)	31.7(0.323) / 32.2(0.328)		
Swing system	Unit swing speed	rpm	9.3		
	Boom swing angle	Left / Right degree	70 / 55		
Blade	Dimensions	Width mm	1960		
		Height mm	410	425	
	Max. lift above ground	mm	440	510	
	Max. drop below ground	mm	405	465	
	Angle	degree	-	25	
Hydraulic oil (Reservoir / System)		ℓ	45 / 79		
Fuel reservoir		ℓ	68		
Operating weight (Including operator's weight @ 75 kgs)	Rubber	kg	5380 / 5470	5570 / 5660	
	Steel	kg	5480 / 5570	5670 / 5760	

The company reserves the right to change the above specifications without notice. This brochure is for descriptive purposes only. Please contact your local Kubota dealer for warranty information. For your safety, Kubota strongly recommends the use of a Rollover Protective Structure (ROPS) and seat belt for almost all applications.

DIMENSIONS



Unit: mm

©2014 Kubota Corporation



KUBOTA Tractor Australia Pty Ltd

25-29 Permas Way, TRUGANINA Vic, 3029
 Freecall: 1800 334 653
 Email: sales@kubota.com.au

Web Site: <http://www.kubota.com.au>

CB Norwood Distributors Ltd

PO Box 1265, 888 Tremaine Avenue,
 Palmerston North 0800 KUBOTA
 Tel: 06 356 4920 Fax: 06 356 4939

Web Site: <http://www.kubota.co.nz>