

# Aussie Pumps

**Aussie Eco-Clean  
Direct Drive Super Scud Series**



**CLASS A  
BLASTER**

AS/NZS 4233.1

No operator certification required

## OPERATOR'S INSTRUCTION MANUAL

Dec 2023

  
**BERTOLINI®**  
**pumps**  
4 year warranty

**3,000 psi AB30**

**4,000 psi AB40-GT**



Operators must read this  
manual and understand it  
before operating this  
machine

*Check out these handover  
videos for set up & tips*

AB30



AB40-GT



**Australian Pump Industries**

[www.aussiepumps.com.au](http://www.aussiepumps.com.au)

REF: ABSS\_SERIES\_Dec 2018

## AUSSIE HIGH PRESSURE BLASTER RISK ASSESSMENT

### MODELS:

In line with the National Occupation Health & Safety Commission's requirements the data below applies to the following Aussie Scud high pressure water blasters:

- ♦ AB30 (Pocket Super Scud)
- ♦ AB 40-GT

**NB: Class A machine operators shall be trained & must be competent but do not require RTO certification under AS/NZS 4233.1**

### DESCRIPTION:

Engine drive high pressure cold water blasters designed for professional cleaning applications.

### MATERIAL CONSTRUCTION:

Aussie AB Super Scud pressure washers are mounted on stainless steel frames. They consist of a quality internal combustion petrol engine driving a triplex style three piston high pressure pump. The machines are supplied with wheels for ease of portability and manoeuvrability. The blasters can be supplied with hose reels to increase operator convenience and safety.



FREE ONLINE  
Aussie Safe Operator training



### RISK RANKING METHOD:

Risk is the combination of the likelihood of a specific unwanted event and the potential consequences if it should occur.

### RISK RANKING TABLE:

The consequences (loss outcomes) are combined with the likelihood (of those outcomes) in the risk ranking table to identify the risk rank of each loss event (e.g. a consequence of 'Moderate' with a likelihood of 'Likely' yields a risk rank of 17).

The table yields a risk rank from 1 to 25 for each set of probabilities and consequences. A rank of 25 is the highest magnitude of risk that is a highly likely, very serious event.

A rank of 1 represents the lowest magnitude of risk, an almost impossible very low consequence event.

Controls must be taken to either eliminate or minimise the risk.

Likelihood	Use the matrix to determine the risk	Consequences				
		Insignificant	Minor	Moderate	Major	Catastrophic
Almost certain		High 11	High 16	Extreme 20	Extreme 23	Extreme 25
Likely		Moderate 7	High 12	High 17	Extreme 21	Extreme 24
Possible		Low 4	Moderate 8	High 13	Extreme 18	Extreme 22
Unlikely		Low 2	Low 5	Moderate 9	High 14	Extreme 19
Rare		Low 1	Low 3	Moderate 6	High 10	High 15



**Risks associated with operating a high pressure cleaner ... for use in daily SAFE WORK METHOD STATEMENT**

Hazard	Risk	Risk Rating	Controls
Entanglement with hose (tripping, falling)	Personal injury of the operator or bystanders	13	<ul style="list-style-type: none"> <li>Warning stickers</li> <li>hose reel option</li> <li>Ensure firm footing before operating machine</li> </ul>
Injury from high pressure water	Personal injury of the operator or bystanders	13	<ul style="list-style-type: none"> <li>Warning notice on blaster</li> <li>Wear eye protection &amp; PPE</li> <li>Use high pressure resistant gloves</li> <li>Always point spray jet at area to be cleaned</li> <li>Use barriers to keep bystanders away from work area</li> <li>Stop jetting if persons enter working area</li> <li>Never leave machine unattended</li> <li>Never point hose at any person or animal</li> <li>Never put your hand over the spray nozzle when operating</li> <li>Stop operating if a malfunction occurs</li> </ul>
Suffocation	Fatality is the risk	18	<ul style="list-style-type: none"> <li>Do not operate engine without suitable ventilation</li> <li>Operator training in working in confined spaces</li> </ul>
Ergonomic lifting or movement on site,	Personal injury	18	<ul style="list-style-type: none"> <li>Operator's Manual</li> <li>Staff training</li> </ul>
High temperature (from engine muffler and other components)	Burns to operator	11	<ul style="list-style-type: none"> <li>Warning sticker on machine</li> <li>Keep clean or hot engine parts</li> </ul>
Fire or explosion	Serious injury, burns	18	<ul style="list-style-type: none"> <li>Do not operate in explosive atmosphere</li> <li>Turn off engine &amp; allow engine to cool before refuelling</li> </ul>
Unsecured machine, moves unattended	Cause of accidents and/or injury	8	<ul style="list-style-type: none"> <li>Use of chocks behind wheels or ute mounting kit</li> </ul>
Noise	Hearing damage	11	<ul style="list-style-type: none"> <li>Use of ear protection</li> </ul>
Dislodged particles in atmosphere	Sight damage	20	<ul style="list-style-type: none"> <li><b>Never clean asbestos</b> with high pressure water</li> <li>Use of eye protection</li> </ul>
Slipping on wet surface	Personal injury	17	<ul style="list-style-type: none"> <li>Use of proper footwear</li> </ul>
Contact with chemical cleaners used to clean surfaces	Skin contact could result in burns, skin irritation etc. Fumes from some chemicals may lead to respiratory problems	22	<ul style="list-style-type: none"> <li>Chemical cleaners to only be used as a last resort when other methods have failed.</li> <li>Areas to be kept well ventilated.</li> <li>Staff to follow manufacturers' instructions at all times for use, storage &amp; disposal.</li> <li>Staff to wear the appropriate PPE</li> <li>Respiratory protection when required</li> </ul>



**NB:** Class A machine operators shall be trained & must be competent but do not require RTO certification under AS/NZS 4233.1

# AUSSIE ECO CLEAN AB SCUD CADET SERIES

## OPERATING & MAINTENANCE INSTRUCTIONS

### GUARANTEE ... EXCLUSIVE 4 YEAR PUMP + 3 YEAR ENGINE WARRANTY (HONDA)

This Aussie Eco Clean product is guaranteed against faults in manufacture for two years from purchase. The **Bertolini** pump has a **four year warranty**, but must be serviced by an authorised service agent every six months to maintain this warranty. Keep your receipt as proof of purchase and all service receipts. This guarantee is invalid if the product is found to have been abused in any way, or not used for the purpose for which it was intended.

**We use only genuine Honda engines with an international 3 year warranty.** In the event of an issue with the engine, the unit must be returned to authorised Honda dealer for evaluation. (Refer to Honda engine handbook for full warranty details).

Routine maintenance is the owners responsibility. Failure to maintain the machine in line with the services outlined on the back page will invalidate warranty. High pressure accessories carry a 3 month warranty.

Where possible return faulty goods to the place of purchase. No products can be returned to us without our prior permission. The reason for return must be clearly state.

**N.B. Warranty is not transferrable to third parties in the event of sale of the machine within the warranty period. Please note that any parts used in warranty repairs are guaranteed for a period limited by the original warranty of the parent product.**

Our goods come with guarantees that cannot be excluded under the Australian Consumer Law. You are entitled to a replacement or refund for a major failure and for compensation for any other reasonably foreseeable loss or damage. You are also entitled to have the goods repaired or replaced if the goods fail to be of acceptable quality and the failure does not amount to a major failure.

The benefits under the Aussie Pump warranty are in addition to other rights under Australian Consumer Law.

### Contents

Blaster Risk Assessment .....	2	F: Applying detergent .....	8
Specifications .....	4	G: Stopping the machine .....	9
Safety precautions .....	5	Care & Maintenance .....	10
Frame & wheel care .....	5	Troubleshooting guide .....	11
Assembly & Preparation for use .....	6	Parts identification .....	12
A: Machine preparation .....	6	Replacement parts .....	13
B: Hose connections .....	7	Pump parts .....	14
C: Before starting .....	7	Warnings .....	16
D: Starting the engine .....	7	Pressure cleaner daily checks .....	16
E: Pressure washing .....	8	Three monthly regular service .....	16



POWERED by  
**HONDA**



### SPECIFICATIONS:

Model	Pump Pressure (psi)	Bertolini Pump Model	EWP Pressure with turbo lance	Flow rate (lpm)	Engine	Pump rpm	Weight (kg)
<b>AB Scud 30</b>	3,000	WBXG3025	4,785	10	Honda GX200 6.5HP	3200	45
<b>AB Scud 40</b>	4,000	TMG4035	6,000	13	Honda GX390 13HP	3200	80





## SAFETY PRECAUTIONS - IMPORTANT

1. **NEVER** direct the spray jet at any surface that may contain asbestos material.
2. **NEVER** direct the spray jet at any person or animal. Keep hands and feet clear of the cleaning nozzle at all times.
3. **NEVER** hold a finger over the high pressure nozzle.
4. **NEVER** direct the spray jet at the machine itself or any electrical equipment.
5. After use, release the pressure in the high pressure hose by operating the gun trigger.
6. **DO NOT** attempt any mechanical repair. If you have a problem with your machine contact your local Aussie Eco Clean Service Division, phone (02) 8865 3500.
7. **NEVER** supply any liquid other than water to the pump inlet.
8. **DO NOT** run dry
9. **NEVER** pull the high pressure hose if it has formed kinks or nooses.
10. **NEVER** pull the hose over sharp objects.
11. **DO NOT** attempt to disconnect any hose or coupling with pressure still in the hose.
12. **DO NOT** join hoses together to extend the length (buy an extra long hose)
13. **DO NOT** operate the machine whilst standing on ladders, use a platform tower or scaffolding.
14. **DO NOT operate** if there is a chance ice has formed in the pump or hose. Thaw first.
15. Operate in well ventilated areas only.
16. **DO NOT** fill the fuel tank while engine is running or hot
17. **DO NOT** try to repair a leak in the hose or connection while the system is under pressure.
18. **DO NOT** substitute any component part on this machine. Use of incorrect parts could cause serious personal injury.
19. Children must **NOT** be allowed to use the machine.
20. **Always use safety goggles** and steel cap boots when using the machine.



## FRAME & WHEEL CARE ... MAINTAIN OPTIMUM PERFORMANCE

Aussie AB blasters now come fitted with top quality **flat free tyres**.

To maintain tyre shape ...

1. Ensure that straps used to secure the unit during transit are not over tightened to the point where tyres
- misshape.
2. Do not leave the unit strapped down for extended periods.
3. Do not drop the unit; this could cause frame distortion or damage bearings.

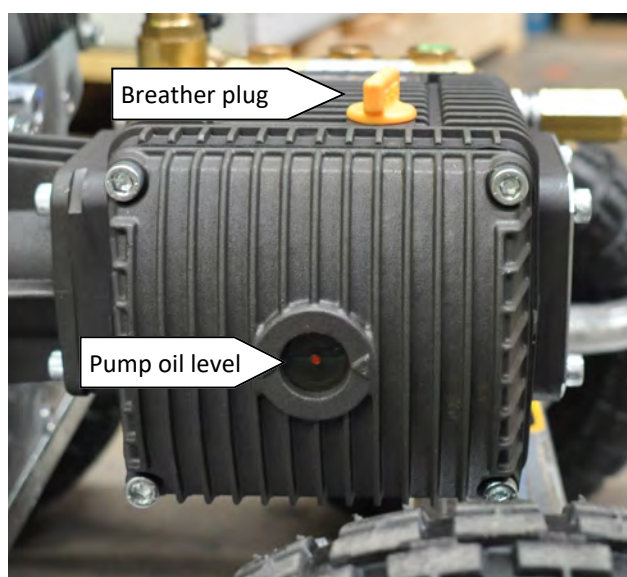


## ASSEMBLY AND PREPARATION FOR USE

Before proceeding with assembly of your new Aussie AB Scud Cadet high pressure blaster, check that all parts listed below are included.

- 1 x Gun handle assembly
- 1 x High pressure hose
- 1 x Lance and nozzle assembly
- 1 x Foamer (AB30 Hose reel version only)

### A. Machine Preparation (initial start-up)



#### 1. Check the oil in the pump.

With the machine on a level surface the oil lever should cover the red spot in the oil level sight glass on the side of the machine. If necessary, top up with SAE 75W-90. Do not mix different grades of oil as this may affect the machines performance. If alternative oil is used, first empty out oil by unscrewing drain plug in bottom of machine.

#### 2. Ensure breather plug is fitted to pump.

**WARNING:** Before operation ensure top mounted travel plug is replaced by the yellow breather plug. Failure to fit breather and keep clean can result in over pressuring of oil chamber (crank case) and can blow oil seals. This will void warranty.

3. **Check oil level in engine** and fill with proper grade oil if necessary. (SAE 10W-30 for Honda engines, check engine manual for other makes)
4. **Check fuel level** and fill if necessary. (unleaded petrol)
5. **Assemble gun/lance.**

### B. Hose Connections

1. Connect high pressure hose to machine outlet (if hose reel not fitted).
2. If optional low pressure downstream, in-line chemical injector is to be used, connect the injector tube to the detergent inlet and place the other end of the tube, with the strainer attached, in the chemical container (not supplied).
3. Connect gun/lance assembly to high pressure hose.
4. Check inlet water filter is clean then connect water supply hose to machine. Use a 25mm (minimum) hose .

Incoming water supply must deliver double the flow of the machine. If questionable, check supply at machine. If supply is insufficient, do not operate from this outlet. For residential use, the outlet closest to the meter will usually deliver the highest flow rate. Connect only to clean town water supply.

#### Warning:

Do not operate from tank or pond. Doing so will cavitate the pump causing damage. Cavitation or pump starvation is not covered by warranty. Cavitation is a phenomenon causing vacuum pockets to form within the pump that eventually implode under pressure pitting the internal pump surfaces.



**C. Before starting the machine**

OPERATE IN WELL VENTILATED AREAS ONLY.

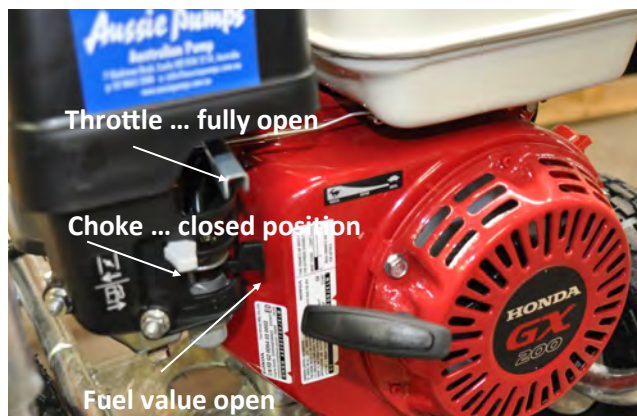
1. Ensure machine is level
2. Turn on water supply.
3. Pull gun trigger until water starts to flow in a steady stream then release trigger.

**D. Starting the engine**

(refer to Honda engine manual for more details)

1. Ensure fuel valve is open
2. Move the choke on the engine to the closed position . If engine is warm, move choke half-way.
3. Turn engine ON/OFF switch to ON
4. Hold the gun trigger on.
5. Start engine, pull the recoil starter grip lightly until resistance is felt, then pull briskly.
6. After engine starts, release the gun trigger and slowly open the choke.
7. Warm up engine for 3 minutes without load.

POWERED by  
**HONDA**

**Aussie Safety Protection Kit**

Unloader - factory set,  
DO NOT adjust

Detergent injector ...  
attach poly tube with strainer

HP hose connection

Safety valve

Thermal dump

Supply hose  
connection

**UNLOADER SETTING**

The high pressure unloader on the machine is factory set operate the pump at it's rated pressure.

**DO NOT ADJUST.** Tampering with the unloader will void warranty and can be dangerous.



## E. Pressure washing

### WEAR PROPER FACE PROTECTION WHEN OPERATING PRESSURE WASHER!

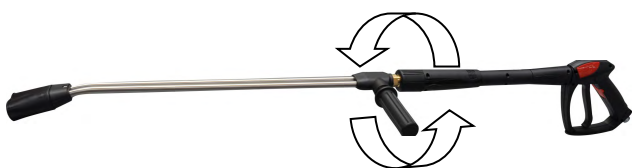
#### AB Scud 30: single vario lance.



For high pressure jetting the black plastic lance head should be pushed fully in. Rotate the plastic head to adjust the angle of the spray jet.

When low pressure and high flow is required, including detergent application, pull the plastic lance head out until it clicks.

#### AB Scud 40: dual lance.



For high pressure jetting rotate side grip on dual lance backwards until it stops. Fine control of pressure/flow can be made with small adjustments to the rotation of the grip. On the single lance There is no pressure adjustment available on single lance options.

When low pressure and high flow is required, including detergent application, unwind grip two complete turns. Adjust the detergent control on the pump as required.

**NOTE:** Check the system for water leaks, fuel leaks, oil leaks, hose kinks, etc. Correct any problems before proceeding.

Machine is now ready for operation.

## F. Applying detergent

**NOTE:** The detergent injection uses a venturi action and operates when low pressure is selected on the gun assembly.

For longer hose lengths (over 8m for the AB30 & 10m for the AB40) the detergent injector will not operate successfully. Use a foamer lance instead (included with AB30 hose reel version, otherwise optional).

1. Prepare pressure washer detergent solution as required by manufacturer.
2. Place detergent siphon tube/filter into solution.
3. Adjust lance to low pressure setting (refer to section E).
4. Apply cleaning solution to a dry surface, starting at lower portion of areas to be washed and work upward, using long overlapping strokes.
5. Allow time for detergent to activate and then rinse off. **DO NOT** allow detergent to dry on.

**IMPORTANT;** You must flush the injection system after each use by placing siphon hose into a bucket of clean water, then run pressure washer in low pressure for 2 minutes.

### HIGH PRESSURE SPRAY CAN PENETRATE THE SKIN & CAUSE SERIOUS INJURY!

Never point the spray gun at yourself, other people or animals.

Should the spray penetrate the skin **SEEK MEDICAL ATTENTION IMMEDIATELY!**

### DO NOT RUN EXCESSIVE BY-PASS

SWITCH MACHINE OFF WITHIN TWO MINUTES OF CEASING OPERATION AS EXCESSIVE BY-PASS CAN CAUSE HEAT BUILD UP IN PUMP AND SUBSEQUENT DAMAGE.

**EXCESSIVE BY PASS RUNNING VOIDS WARRANTY!!**



**Using Foamer**

(supplied with AB30 hose reel version)

1. Using brass nipple supplied (C1500.06, M22 x ¼M), attach foaming nozzle to the gun in place of Vario lance.
2. Prepare pressure washer detergent solution as required by manufacturer.
3. Fill foamer bottle and screw into foamer nozzle. Ensure siphon tube is attached inside bottle.
4. Spray angle can be adjusted by rotating the nozzle cover. The amount of foam delivered is adjusted with the knob on top.
5. Apply cleaning solution to a dry surface, starting at lower portion of areas to be washed and work upward, using long overlapping strokes.
6. Allow time for foam to activate and then rinse off. DO NOT allow foam to dry on.

**IMPORTANT:** rinse foamer nozzle & bottle with clean water after every use to prevent clogging.

**FOAMER APPLIES DETERGENT TO DISOLVE GREASE**

(applied at low pressure)

**G. Stopping the machine**

1. If using the detergent injector, flush out the chemical by running clean water through the system.
2. Allow machine to run for 1 minute without load to cool before stopping.
3. Turn engine ON/OFF switch to OFF
4. Pull recoil start until compression resistance is felt. Store the machine in this position to help prevent valve warpage or sticking.
5. Close fuel valve.  
**FAILURE TO CLOSE THE FUEL VALVE ON THE ENGINE CAN CAUSE FUEL LEAKAGE WHEN THE MACHINE IS BEING TRANSPORTED!**
6. Turn off water supply.
7. Pull gun trigger to release all pressure in the system, then LOCK THE TRIGGER.
8. Hoses may now be disconnected from the machine.

Failure to release pressure before disconnecting the hose quick coupler will result in the quick coupler o-ring seal blowing out. This o-ring must be replaced before operating machine.

**CLEAN FASTER WITH A FLAT SURFACE CLEANER**

**CARE & MAINTENANCE:****AFTER EACH USE**

If cleaning agents have been mixed with the incoming water, it is essential to flush the machine with clean water after use.

If there is a danger of freezing anti-freeze should be mixed with the flush water or the machine must be completely drained.

After the final flush stop the machine. DO NOT allow the machine to idle for more than 15 seconds. This is particularly important when there is a danger of freezing. Do not run for longer without water supply.

**STORAGE**

Store the washer in an upright position, preferably drained of water if there is a danger of freezing (or fill with anti-freeze).

**PUMP CRANKCASE LUBRICATION**

Proper pressure washer pump crankcase lubrication will help extend the working life of the machine. Follow these important guidelines. We recommend keeping a simple service log book.

- Change oil in pump after initial 50 hour run-in period. (SAE 75W-90)
- Change pump oil every 3 months, use high quality oil. (SAE 75W-90)
- Pump oil level can be checked with the dip stick under the breather cap or by viewing the oil sight gauge where fitted. The oil level is correct if level is in the centre of the gauge. If oil level is low, fill to correct level with recommended oil (SAE 75W-90). **DO NOT OVERFILL CRANKCASE!**

**PREVENTATIVE MAINTENANCE**

- Keep filter in supply hose connection clean, rinse regularly.
- Use correct size nozzles for machine and replace when worn, check serial tag for correct size.
- Drain water from pressure hoses, gun/lance assembly and accessories after use.
- Protect pump from freezing. Failure to remove water from the pump in freezing temperatures will result in damaged pump manifold.
- **DO NOT** tamper with unloader valve adjustment or alter engine speed.
- **DO NOT** siphon chemicals through the pump, it is designed for water only.
- Incoming water supply must not exceed 60°C, otherwise pumps seal damage could result
- Follow engine manufacturers guidelines for engine maintenance. (see engine manual)

**WARNING:****CHECK NOZZLES AND REPLACE IF WORN**

If pressure drops off, check nozzle for wear. Nozzles should be replaced on a regular basis (every month for machines in regular use, every 3 months for machines used intermittently. Using the machine with the incorrect nozzle size or worn nozzle will void warranty and can be dangerous to the operator.



## TROUBLE SHOOTING GUIDE

FAULT	CAUSE	REMEDY
<b>Pump running normally but pressure low on installation</b>	Pump sucking air Valves sticking Unloader valve seat faulty Nozzle incorrectly sized Worn piston packing	Check water supply and possibility of air ingress. Check and clean or replace if necessary Check and replace Check and replace Check and replace
<b>Fluctuating Pressure</b>	Valves worn Valves blocked Pump sucking air Worn piston packing	Check and replace Check and replace Check water supply and air ingress at joints in suction line Check and replace
<b>Pressure low after period of normal use</b>	Nozzle worn Check valves worn Check valves blocked Unloader valve seat worn Worn piston packing Cracked pistons as a result of dry running	Check and replace Check and replace Check and clean Check and replace Check and replace Replace pistons
<b>Pump Noisy</b>	Air in suction Broken or weak suction or delivery valve spring Foreign matter in valves Worn bearing Excessive temperature of liquid	Check water supply and connections on suction line Check and replace Check and clean Check and replace Reduce temperature
<b>Presence of water in oil</b>	Oil seal worn High humidity in air Piston packing worn	Check and replace Check and change oil twice as often Check and replace
<b>Water dripping below pump</b>	Piston packing worn or plunger retainer worn	Check and replace
<b>Oil Dripping</b>	Travel plug in use on pump Oil seal worn	Replace with breather plug Check and replace if necessary
<b>Unloader valve switches repeatedly when gun is off</b>	Leaking gun and/or pressure pipe. Leaky sleeve Worn out kick-back valve body Leaky seals	Renew gun, seal pressure pipe Renew sleeve Check and renew as necessary kick-back valve plate and seat Renew seals
<b>Leaky piston rod</b>	Defective O-Ring/Support Ring	Renew piston rod seals and examine surfaces in guide case
<b>Leaky by-pass at nominal pressure</b>	Nozzle too small, too much water on by-pass. Worn out unloader valve	Install larger nozzle Examine and renew as necessary.
<b>Pressure gauge shows high pressure fluctuations when shutting off gun</b>	Valve set too high above operating pressure Dirty valve	Adjust the unloader at the operating pressure. Clean valve (removing lime deposits etc). Grease parts before re-installing.
<b>Engine will not start</b>	Out of petrol Engine defect	Fill tank with petrol Return to engine service agent

For engine troubleshooting refer to the Honda engine handbook.



PARTS IDENTIFICATION



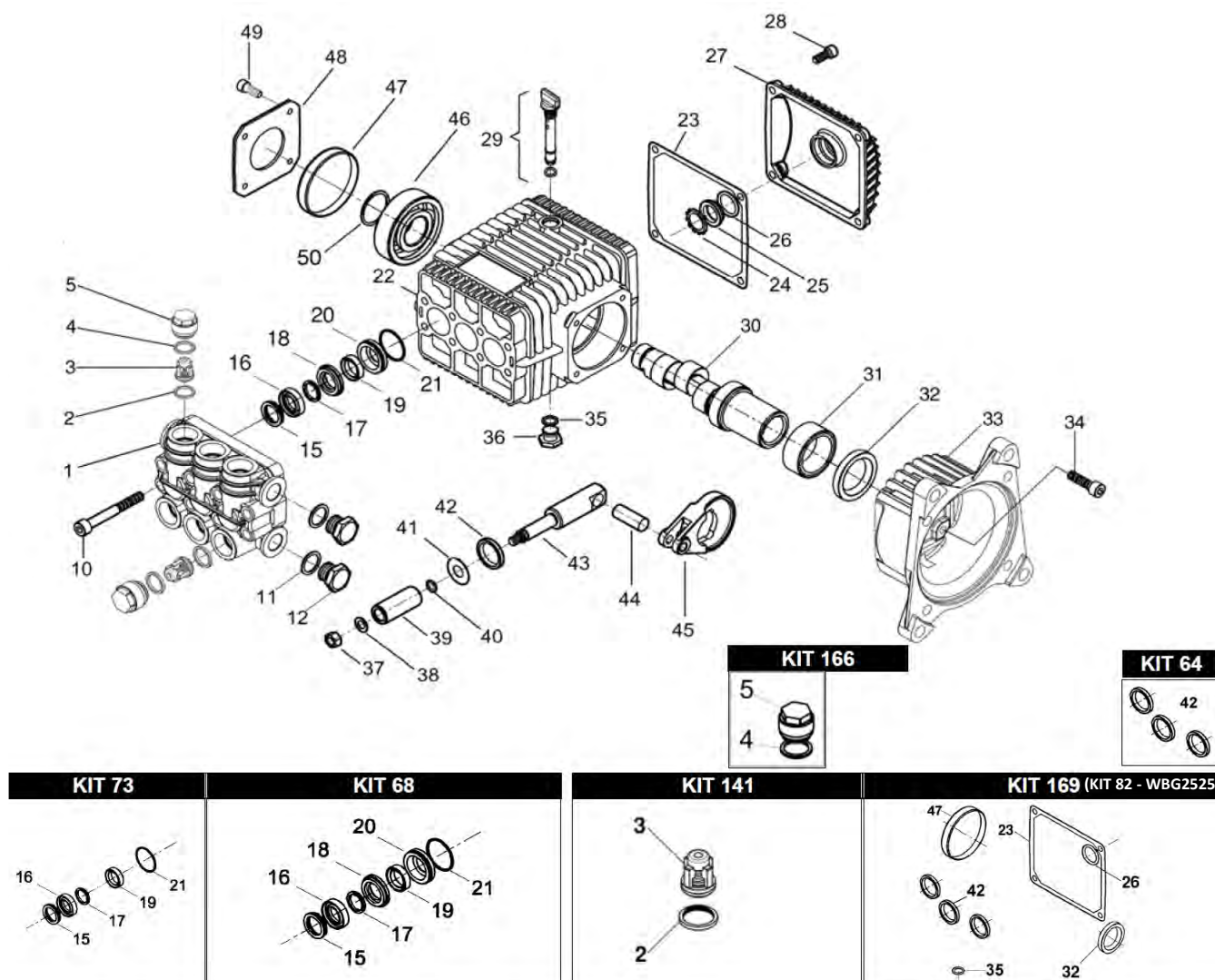
Model	Engine	Pump Model	Pump Pressure (psi)	EWP	Flow rate (lpm)	Frame style	Pump rpm
AB Scud 30	Honda GX200 6.5HP	WBXG3025	3100	4785	10	Four wheel full frame	3200
AB Scud 40	Honda GX390 13HP	TMG4035	4000	6000	13	Four wheel full frame	3200



## REPLACEMENT PARTS

			AB Scud	
Position	Part No	Description	30	40
<b>Nozzles</b>				
A & B	C915030M	HP NOZZLE (15° ANGLE, TIP SIZE 30)		x
	C915500MSS	LP DETERGENT NOZZLE		x
<b>Lance</b>				
C	C4723.45.115	VARIO LANCE	x	
	C3924.01	684MM SS DOUBLE LANCE C/W BOOT		x
<b>Gun</b>				
D	M4021108007	AL13 GUN WITH MELTED HANDLE& QC	x	
	M4022209003	AL55 GUN WITH MELTED HANDLE & QC		x
<b>Hose</b>				
E	AHW06M22X2X8	8 MTR HP HOSE (R2, 3,000 PSI) WITH QUICK COUPLER	x	
	AHW06M22X2X10	10 MTR HP HOSE (R2, 4500 PSI) WITH QUICK COUPLER		x
<b>Unloader</b>				
F	BAPR-I-25ADJ	UNLOADER VALVE	x	
	BAPRI 40ADJ	UNLOADER VALVE		x
<b>Thermal Dump Valves</b>				
G	MPA60063050	THERMAL DUMP VALVE 3/8"	x	
	MPA60063070	THERMAL DUMP VALVE 1/2"		x
<b>Safety Valves</b>				
H	MTM00033003	3600 PSI SAFETY VALVE	x	
	MPA60156000	4000 PSI SAFETY VALVE		x
<b>Inlet Strainer</b>				
I	AYSTRAINER-200	1/2" STRAINER	x	x
<b>Pumps</b>				
K	BWBXG3025	BERTOLINI PUMP (3000 PSI, 10 LPM)	x	
	BTMG4035	BERTOLINI PUMP (4000 PSI, 13 LPM)		x
<b>Wheel</b>				
L	A400015	10" WHEEL	x	x
<b>Engine Mounts</b>				
M	AENGINEMOUNTS300	ENGINE MOUNTS (4 NEEDED)	x	x

## PUMP PARTS WBXG3025 (AB30)



Kit No.	Part No.	Description
68	B049840973	Seal Kit Major (21 pieces)
73	B049843973	Seal Kit Minor (15 pieces)
169 (WG3025) 82 (WBG2525)	B049963973 B049846973	Oil seal kit (8 pieces)
141	B019826973	Valve kit (12 pieces)
Item 29	B049832973	OIL FILLER PLUG (1 piece)
Item 25	B040120322	OIL SIGHT GLASS (1 piece)

**BERTOLINI®**  
pumps  
4 year warranty

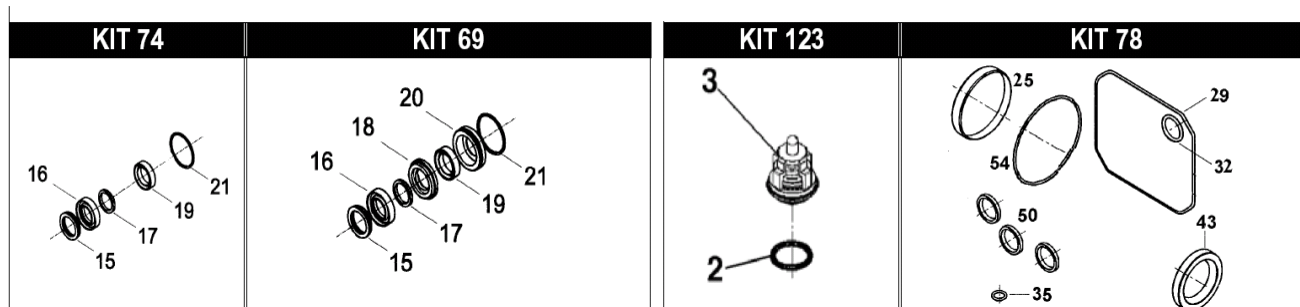
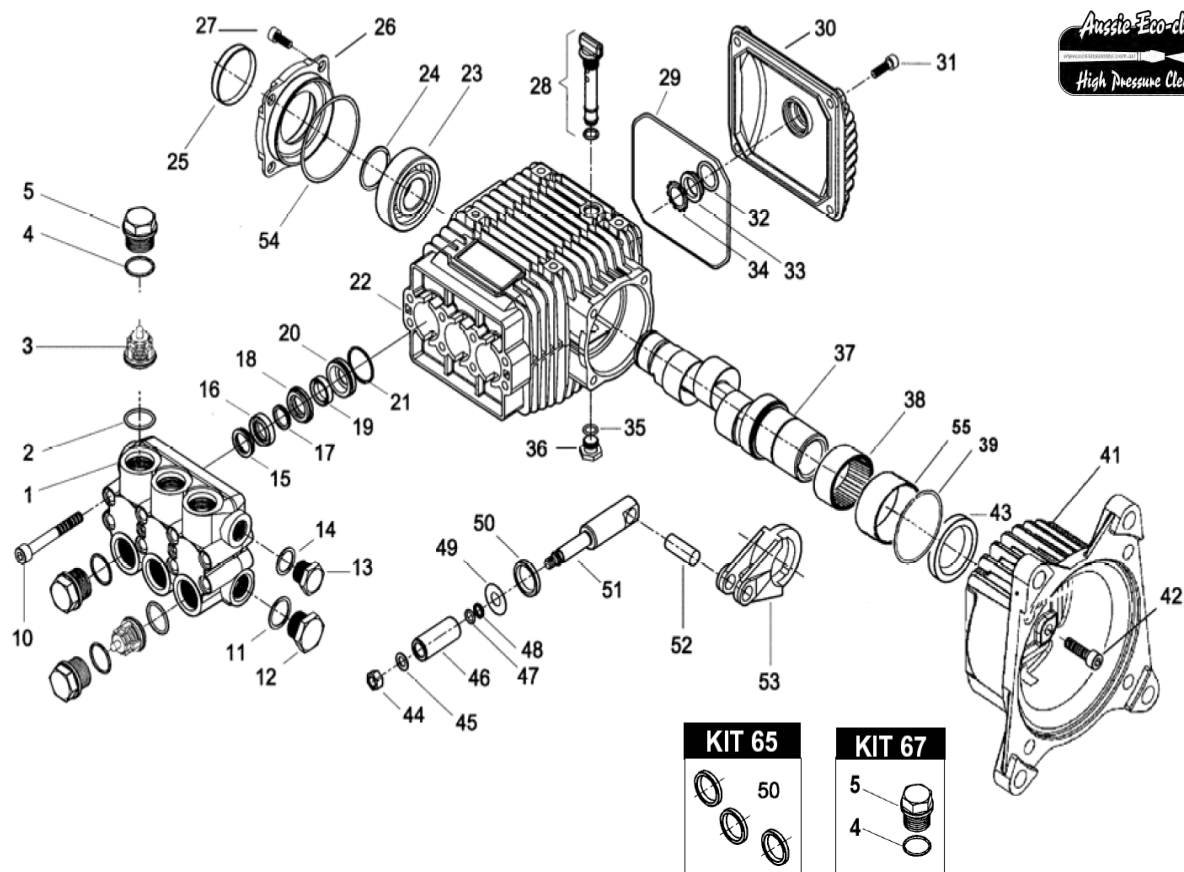
**Need guidance on servicing your Bertolini high pressure pump?**

Down-load your copy of the Aussie Bertolini Service guidelines from the customer service page of the Aussie website [www.aussiepumps.com.au](http://www.aussiepumps.com.au).

Order the right part first time ... specify the pump model number when ordering parts. Full parts breakdowns available online ... [www.aussiepumps.com.au](http://www.aussiepumps.com.au)



## PUMP PARTS TMG4035 (AB40-GT)



Kit No.	Part No.	Description
123	B069867973	VALVE KIT
74	B079806973	SEAL KIT MINOR
69	B079804973	SEAL KIT MAJOR
65	B049837973	OIL SEAL KIT
Item 25	B040120322	OIL SIGHT GLASS
Item 29	B049832973	OIL FILLER PLUG

## Need guidance on servicing your Bertolini high pressure pump?

Down-load your copy of the Aussie Bertolini Service guidelines from the customer service page of the Aussie website

[www.aussiepumps.com.au](http://www.aussiepumps.com.au)

Order the right part first time ... specify the pump model number when ordering parts. Full parts breakdowns available online ...

[www.aussiepumps.com.au](http://www.aussiepumps.com.au)

**BERTOLINI®**  
pumps  
4 year warranty





## OVERSPEEDING

Do not operate machine at over 3200rpm (engine speed). Over speeding can cause serious pump damage.

## HIGH PRESSURE SETTING

The high pressure pump is factory set to operate at its rated pressure. **DO NOT ADJUST.** Tampering with the pressure regulator will void warranty and can be DANGEROUS.

## EXCESSIVE BYPASS

Do not run on excessive by-pass. Switch machine off within five minutes of ceasing operation as excessive by-pass can cause heat build up in pump and subsequent damage. Excessive bypass running voids warranty.

## CHECK NOZZLE MONTHLY

If pressure drops off check nozzle for wear. Nozzles should be replaced on a regular basis (every month for machines in regular use, every three months for machines used intermittently). Using the machine with the incorrect nozzle size or worn nozzle will void warranty and can be DANGEROUS to the operator.

## PRESSURE CLEANER DAILY CHECK LIST

- Check pump oil level
- Check engine oil level
- Check nozzle for wear
- Check all high pressure components for leaks:
  - gun/lance
  - HP hose
  - all fittings
- Check water filter and clean regularly
- Check unloader, safety valve and thermal dump for leaks



**BEWARE** of abrasions on hose and replace if damaged ... **STAY SAFE**

## THREE MONTHLY REGULAR SERVICE

All professional machines need to be thoroughly serviced every three months. The service involved should include the engine manufacturer's recommendations (see separate Engine Manual) and the following;

- Change pump oil
- Check filter for foreign debris
- Check unloader, safety valve and thermal dump for leaks
- Check all HP components for leaks: Gun/lance, HP hose and all fittings
- Replace nozzles

## Aussie Accessories ... save time, save \$\$\$, save water



**Australian Pump Industries Pty Ltd**

8 Solent Circuit, Norwest NSW 2153

Ph: (02) 8865 3500

www.aussiepumps.com.au info@aussiepumps.com.au

